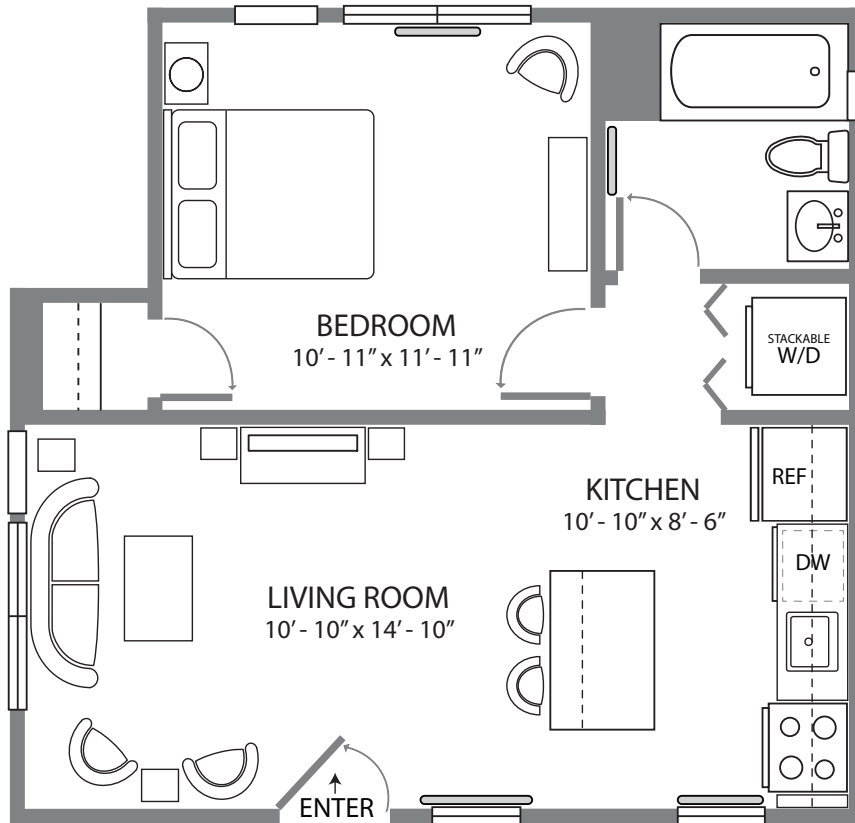
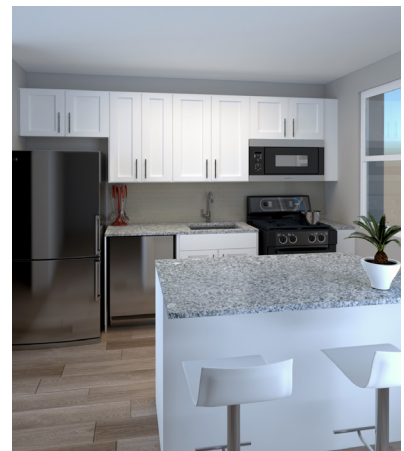


# SELMA

## TYPE A - UNIT 5



- 483 Sq. Feet
- 1 Bedroom
- 1 Bath



## NEWLY RENOVATED!

- Updated Open Floorplan
- Shaker Style Kitchen Cabinets
- Granite Countertops
- Stainless Steel Appliances
- Undermount Stainless Steel Sink
- Dishwasher
- Kitchen Island
- Luxury Plank Flooring
- Enlarged Porcelain Tile Bath
- Cultured Marble Vanity Top
- Laundry - Stackable W&D

Plans and furnishings are for marketing purposes only, and are not to scale. Please inspect construction, subdivision, utility, landscape and other plans available through leasing center for complete and specific information. Actual locations may vary and items shown or not shown on this place are subject to errors, omissions and field changes.

\*All units can be reasonably adapted for handicap accessibility for an extra charge.



908.725.2909

129 Mercer Street  
Somerville, NJ 08876

brooksidegardens@edgewoodproperties.com



BROOKSIDE  
G · A · R · D · E · N · S